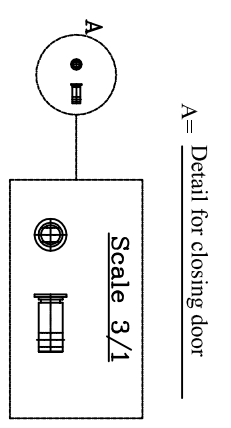
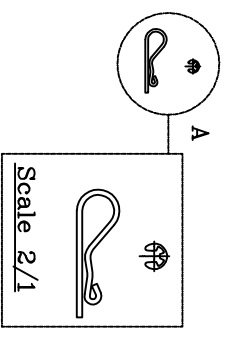
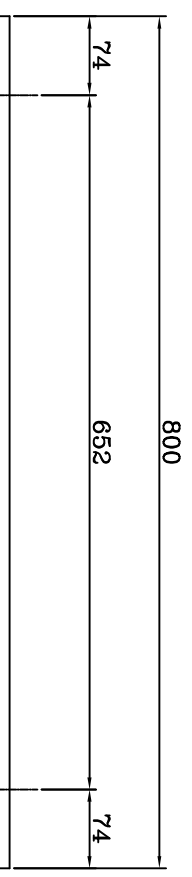
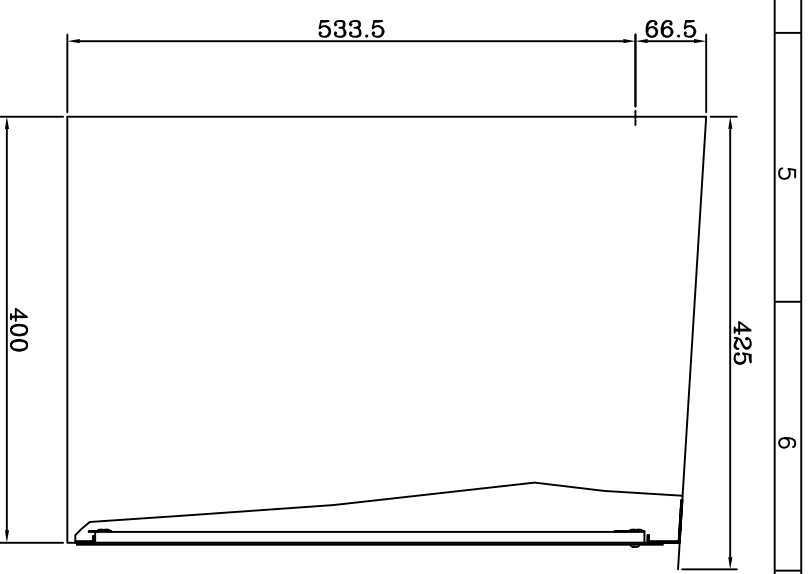
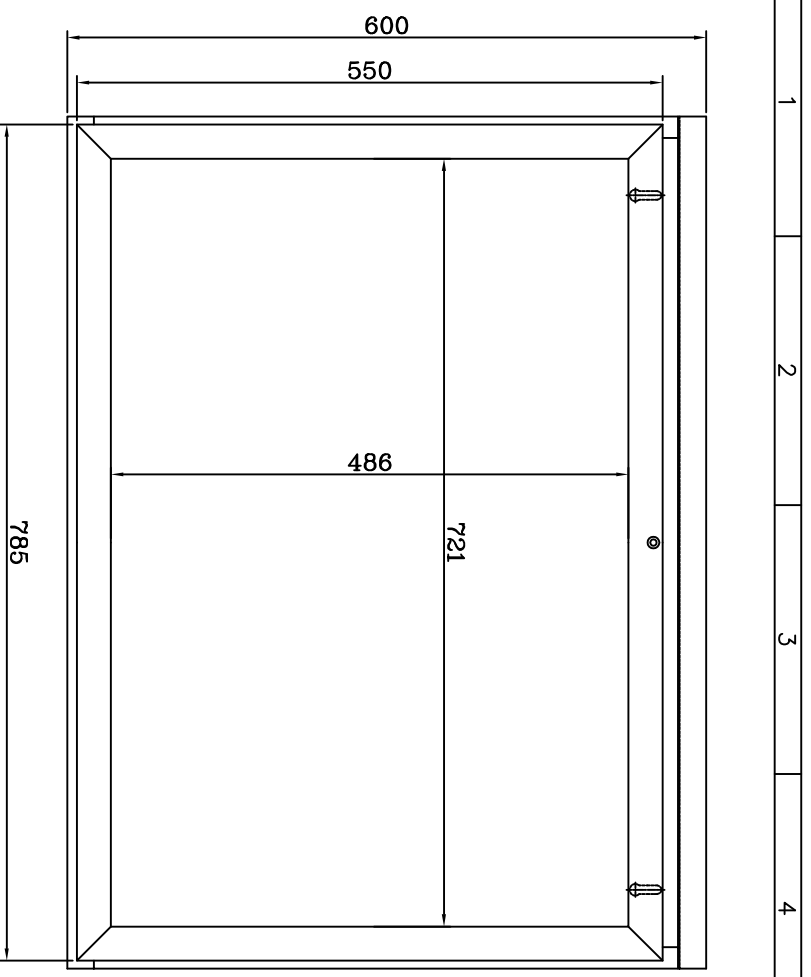


Disponibile sia in lamiera verniciata
RAL 3000 sia in acciaio INOX



A = Details for closing door

TOLLERANZE / TOLERANCES		INDICE		NATURA DELLA MODIFICA		DATA	FIRMA
LUNGHEZZA / LENGTH	ANGOLI / ANGLES	SMISURI / DEVIATIONS	RAGGI / RADIUS				
UNI - ISO 27188		ALBERI / SHAFTS H13		DENOMINAZIONE / DENOMINATION			
FORI / HOLES		SCALA / SCALE MATERIALE / MATERIAL		CASSETTA MOTOPOMPA 3" 4" ROSSA/RED CABINET COUPLING UNIT			
ZIGGIOTTO & C. RONCO ALL'ADIGE VERONA - ITALIA		DUREZZA / HARDNESS		PESO / WEIGHT		DM L	FRMA
		RESISTENZA / STRENGTH		TRATTAMENTO/TREATMENT		07/12/05	FRMA

A termini di legge è valido l'uso, la divulgazione e la riproduzione senza autorizzazione scritta della ZIGGIOTTO & C. K:\Disegn\D. Met. Def.\Cassette\A0981 REV.0 sch-Art 56 REV.0