



**THE INCH[®]
STANDARD RESPONSE
AUTOMATIC SPRINKLER
GL5658
ONE INCH ADJUSTABLE
CONCEALED PENDENT**

SERIES GL-SR/INCH

DESCRIPTION AND OPERATION

The Globe GL5658 One Inch Adjustable Concealed Pendent Sprinkler has a low profile, aesthetically pleasing design. It offers the additional feature of greatly increased safety to life and should be used advisedly and under the direction of approving authorities having jurisdiction. The sprinkler is available with a nominal 1" of adjustment and a low profile cover plate assembly. All that is seen at the ceiling is a 70mm (2 3/4") or 84mm (3 5/16") diameter ceiling plate color finished to match the specifier's exact requirements. The GL Series Concealed Sprinkler may be virtually invisible as it does not interrupt the "smooth flow" of the ceiling. The GL5658 utilizes a 5mm frangible glass ampule which is located above the ceiling and concealed from view by the ceiling plate.

The provided protective cap needs to be removed in order to install the sprinkler with the proper wrench. The protective cap must be replaced on the sprinkler until the time the cover plate is to be installed. The "push on - screw off" designed cover plate is easily installed and with a nominal 1" of adjustment makes it easier to get a proper fit at the ceiling.

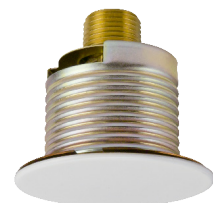
Operation of the sprinkler occurs when heat build up causes the solder holding the cover plate to the support shell to melt allowing the cover plate to fall clear. Continued heat build up causes the glass bulb to burst allowing the deflector to drop down and distribute water in an approved pattern to extinguish or control the fire.

TECHNICAL DATA

- See reverse side for Approvals and Specifications.
- Temperature Ratings -
 - 68°C (155°F) Sprinkler, 57°C (135°F) Cover Plate
 - 79°C (175°F) Sprinkler, 68°C (155°F) Cover Plate
 - 93°C (200°F) Sprinkler, 68°C (155°F) Cover Plate
- Water Working Pressure Rating - 12 Bars (175 psi)
- Factory tested hydrostatically to 34 Bars (500 psi)
- Maximum low temperature glass bulb rating is -55°C (-67°F)
- Frame - bronze • Deflector - brass • Screw - brass
- Lodgement Wire - stainless steel • Bulb seat - copper
- Spring - nickel alloy • Seal - teflon • Drop Pin - stainless steel
- Bulb - glass with glycerin based solution, 5mm size
- Cover Plate - brass • Upper Escutcheon Assembly - steel



84mm (3 5/16") diameter plate



70mm (2 3/4") diameter plate

**SERIES GL-SR/INCH
ONE INCH ADJUSTABLE
CONCEALED PENDENT**



NOTE: Globe's wrench P/N 332765 must be used to install this sprinkler.

• SPRINKLER TEMPERATURE RATING/CLASSIFICATION and COLOR CODING

CLASSIFICATION	AVAILABLE SPRINKLER TEMPERATURES		BULB COLOR	N.F.P.A. MAXIMUM CEILING TEMPERATURE	
ORDINARY INTERMEDIATE	68°C 79°C/93°C	155°F 175°F/200°F	RED YELLOW/GREEN	38°C 66°C	100°F 150°F

THE INCH® STANDARD RESPONSE AUTOMATIC SPRINKLER MODEL GL5658 ONE INCH ADJUSTABLE CONCEALED PENDENT

SPECIFICATIONS

NOMINAL "K" FACTOR	THREAD SIZE	LENGTH	FLAT COVER PLATE FINISHES***
80 metric (5.6 english)	15mm (1/2"NPT)	6.4cm (2 1/2")	Chrome White Painted Other Finishes ^{1,2}

NOTE: CONVERSIONS ARE APPROXIMATE.

¹FINISHES AVAILABLE ON SPECIAL ORDER.

²FOR PLATES OTHER THAN WHITE, CONTACT GLOBE FOR ORDERING SPECIFICATIONS.

***FACTORY PAINTED COVER PLATES MUST NOT BE REPAINTED. NON-FACTORY APPLIED PAINT MAY ADVERSELY DELAY OR PREVENT SPRINKLER OPERATION IN THE EVENT OF A FIRE.

APPROVALS

STYLE	SIN MODEL	HAZARD ¹	57°C (135°F) 84mm DIA. Cover Plate	68°C (155°F) 70mm DIA. Cover Plate		LPCB ²	CE
			68°C (155°F) Sprinkler	79°C (175°F) Sprinkler	93°C (200°F) Sprinkler		
Adjustable Concealed Pendent	GL5658	LH/OH	X	X	X	X	X

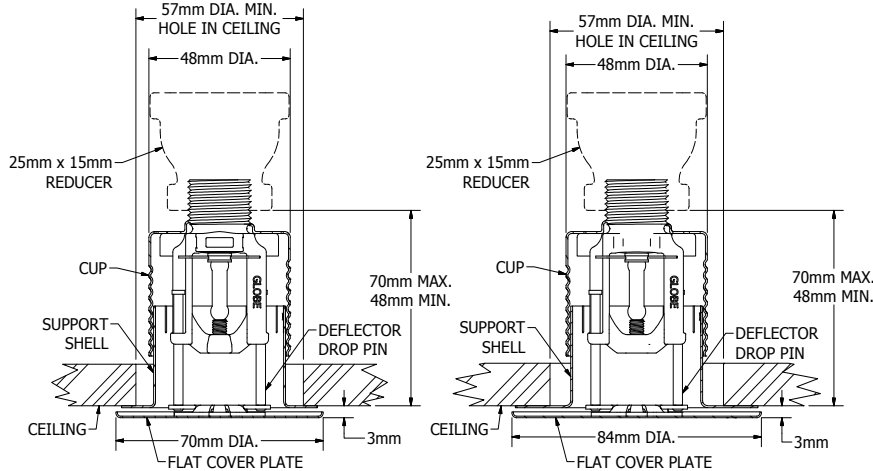
¹SPRINKLERS SHALL BE LIMITED AS PER THE REQUIREMENTS OF EN12845 AND ANY OTHER RELATED DOCUMENTS.

OH: ORDINARY HAZARD

LH: LIGHT HAZARD

²LPCB REF. NO. 140c/06

CROSS SECTIONS



ONE INCH ADJUSTABLE FLAT PLATE CONCEALED PENDENT

FLAT COVER PLATE SIZES	WHITE 57°C (135°F) PART #	WHITE 68°C (155°F) PART #	CHROME 57°C (135°F) PART #	CHROME 68°C (155°F) PART #
70mm (2 3/4") DIA.	N/A	332731	N/A	332729
84mm (3 5/16") DIA.	332706	N/A	332704	N/A

ORDERING INFORMATION SPECIFY

- Quantity • Model Number • Style • Orifice
- Thread Size • Temperature • Finishes desired
- Quantity - Wrenches - P/N 332765
- Quantity - Protective Caps - P/N 332695

GLOBE® PRODUCT WARRANTY

Globe agrees to repair or replace any of its own manufactured products found to be defective in material or workmanship for a period of one year from date of shipment.

For specific details of our warranty please refer to Price List Terms and Conditions of Sale (Our Price List).



AUG 2018

PRINTED U.S.A.

4077 AIRPARK DRIVE, STANDISH, MICHIGAN 48658
989-846-4583 FAX 989-846-9231
1-800-248-0278 www.globesprinkler.com

GFS-150f (Formerly A-69CE)