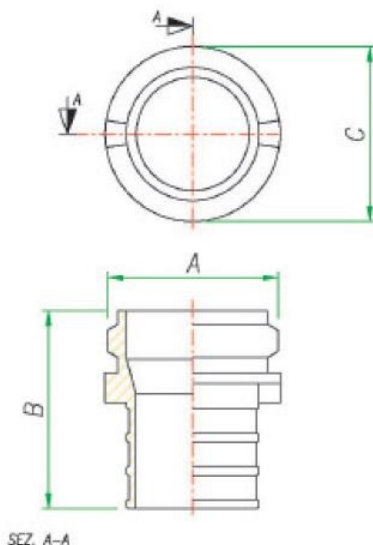


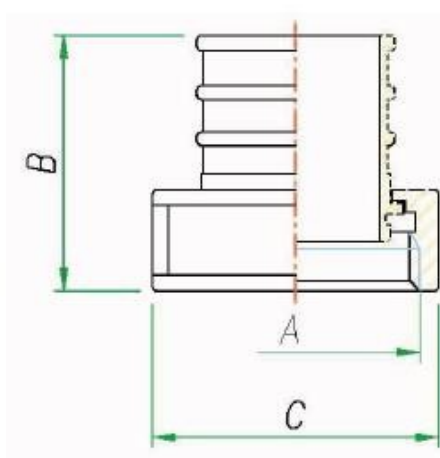
Art. 23 RACCORDI FORMA A PER TUBAZIONI PREMENTI

Raccordi in tre pezzi ottone e alluminio a tabella UNI 804 con guarnizione.



DATI DIMENSIONALI

	DN25	DN45	DN70
A	M34 x 3	M56 x 4	M85 x 6
B	71	92	119
C	42	67	100



DATI DIMENSIONALI

	DN25	DN45	DN70
A	M34 x 3	M56 x 4	M85 x 6
B	57	77	99
C	48	75	105

DN	MATERIALE
25	OTTONE
45	OTTONE O ALLUMINIO
70	OTTONE

Rev,0 del 24.02.2023